

# University of Miami Miller School of Medicine

## Miami, FL

### PROJECT DETAILS

Project Area: approximately 80 acres  
Client: University of Miami  
Miller School of Medicine  
Year Designed: 2007  
Website: med.miami.edu

For more information, visit [doverkohl.com](http://doverkohl.com).



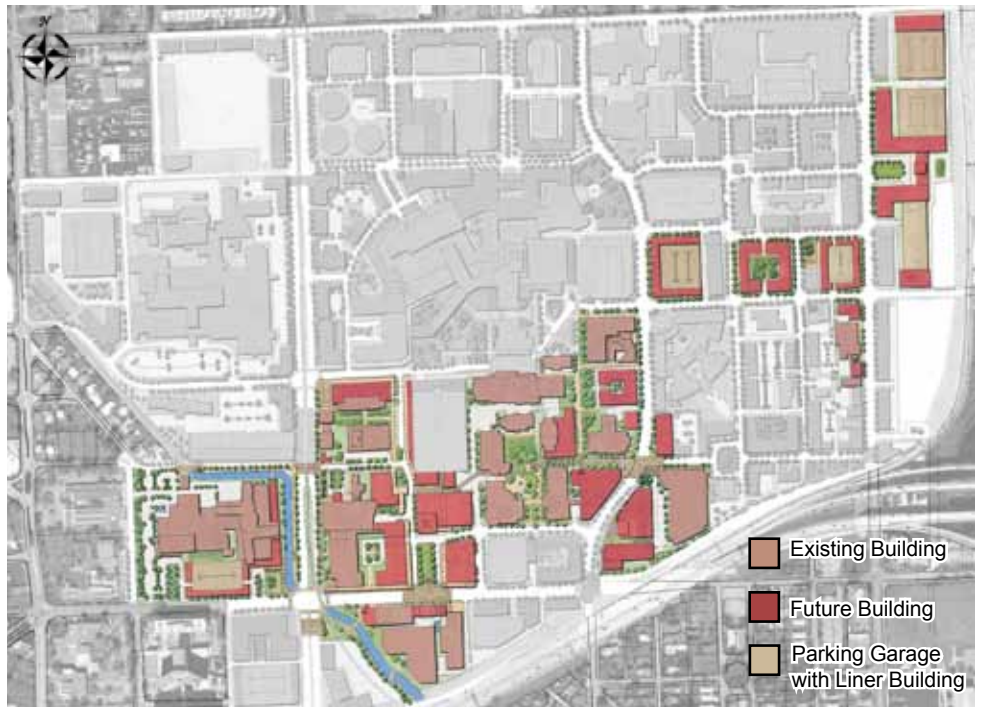
An aerial view of the campus looking from the northwest



The proposed "heart" of campus creates a powerful "front door" to the school, drawing visitors into the center of campus. Opening the plaza to NW 14th Street increases the visibility of the campus and enhances the potential for thriving retail uses to be located along the plaza and street.



Buildings at the Life Sciences Center are located within a former "superblock" parcel. The block has been re-configured into a series of walkable, well-connected streets to create a high level of pedestrian activity and a vibrant edge to the campus.



### The Project

Established as an academic medical center in 1952, the University of Miami Miller School of Medicine (UMMSM) now treats more than 1,000,000 patients annually, serving South Florida, South America, and the Caribbean in education, research, patient care, and community service. The facility's location was once part of an estate and surrounding golf course—an isolated precinct that remained distinct from surrounding residential blocks for the first half of the twentieth century. The addition of highways and arterial roadways carrying increased traffic past and across the region further isolated the area, while growth and integration of the district's institutions extended beyond its original boundaries. The campus now actively spans NW 14th Street, as well as NW 7th, 9th, 10th, and 12th Avenues. Faculty, staff, patients, and visitors criss-cross the district on numerous daily trips. With more than 67,000 daily employees and visitors, the district is now a destination as large as many city centers.

In January 2007, the school initiated a long-term plan for the campus to ensure that all future development enhances the quality of life of the faculty, staff, students, patients, visitors, and neighbors. Chief among these goals is the role of the campus as a model healthy community. Assisting Dover-Kohl in the creation of the Master Plan were consultants Hall Planning & Engineering, Inc., Gibbs Planning Group, Inc., UrbanAdvantage, and the University of Miami School of Architecture.

### Process and Principles

As the UMMSM continues to advance as a leader in medical education, patient care, and research, and the need for facilities grows, it will be increasingly important to carefully craft and design the public spaces in an effort to promote a sense of well-being both inside and outside of campus buildings. In September 2007, the UMMSM community, along with individual and institutional neighbors, joined together with Dover, Kohl & Partners to create a vision for a unified, world class campus through a ten-day, open door, community planning process. Several key principles were established during the charrette to address the needs and vision for the future of the campus. These goals included designing the campus as a destination within the city; improving circulation; increasing walkability; creating green and gathering places; and anticipating future growth. The Master Plan and Design Guidelines were formed around these key principles and through continual input and feedback from charrette participants.

### Status

The Creating a World Class Campus Design Handbook, which includes the Master Plan and Design Guidelines, is currently under review by the University of Miami.

# Creating a World Class Campus

## Tropical Architecture

Successful urban architecture responds to the climatic conditions of a place. The basic components of tropical urban architecture, in particular, make passage among buildings possible in the heat of South Florida's sun and the downpours that mark the rainy season. These components, which will enhance campus connectivity and identity, may be expressed in architectural styles that range from historic to avant-garde. The importance is the continuity of proportion and dimension and the enhancement of pedestrian life. Greater consensus on style, of course, will further unify the campus. The style-neutral tropical streetscape elements illustrate a series of components that enhance the experience of the pedestrian, providing protection from the elements and surveillance from within.

## Pedestrian-Friendly Streets

Wide travel lanes that traverse the campus allow traffic to move rapidly, but impede pedestrian crossing. These streets often carry a high volume of traffic during the day but not at night; the lane width becomes a major safety hazard during the off-peak hours, allowing drivers to speed regardless of pedestrian traffic.

Redesigned, pedestrian-friendly streets can accommodate traffic at speeds much more suitable for a walkable district. Improvements include wider sidewalks, narrower travel lanes, street trees, and colonnades. A minimally textured paving pattern lets drivers know to drive slowly and cautiously, without disturbing urgent care travel.



Existing view of Northwest 14th Street



The proposed Northwest 14th Street, which features streetscape improvements and new buildings that face the street, creates a more pedestrian-friendly environment.



Colonnades protect pedestrians from the rain and heat and provide shady places to dine outdoors.



Tall buildings are designed to improve the streetscape as well as the skyline.

## Pedestal Buildings

Major buildings of substantial height enhance pedestrian life when the base of the building responds to the needs of the streetscape. The introduction of a uniform pedestal height establishes ground level conditions that favor pedestrian life and at the same time provides an opportunity to maximize land value through tower height. The setback of the full height tower from the base allows light to reach the street and the designated pedestal height provides continuity along the street. At the same time, individual towers are free to showcase unique architectural characteristics. The pedestal addresses the human aspects of the building, such as the need for climate protection, a mix of uses, and "eyes-on the street," all of which assure a safe and thriving streetscape.